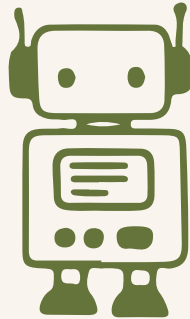
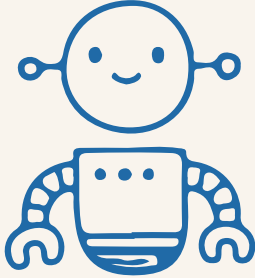
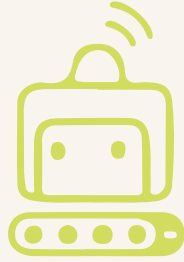
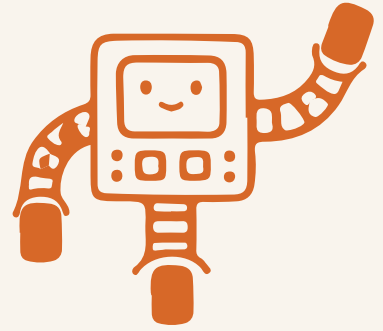
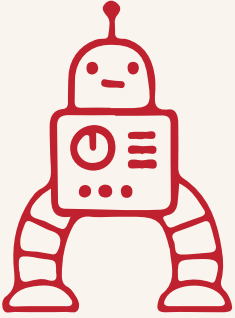


INNOVATION ARENA





Tradition of ITU Future of Robotics

Innovation Arena Category Rules



The ITURO team reserves the right to cancel this category if it deems the competitors' projects insufficient.

Task Definition

- 1. In this category, competitors will display their projects to the "Innovation Arena" jury and event participants for three days.

Competition

- 2. Due to limited space in the competition area, only the competitors who receive positive feedback from the ITURO team can participate in this category.
- 3. The rankings of the competitors are determined based on the scoring made by the jury members appointed by the ITURO team, taking into account the following criteria:
 - a. Design
 - b. Innovative aspect
 - c. Use of technical knowledge
 - d. Presentation performance
- 4. In the area where the projects are displayed, there will be one panel per project for sticking posters. The panels have a width of 80 cm and a height of 170 cm.
- 5. Competitors will upload their project file and any other documents they wish to submit to Google Drive when registering. The Google Drive link will be obtained from the competitors during registration. The Google Drive link must be active and accessible until the competition rankings are announced. Competitors are responsible for the preservation of the data on Google Drive.
- 6. There is no age restriction for participants.
- 7. The project file should include a project report in the appropriate format. Competitors can access the report format via this [link](#).
- 8. Adding working images or videos of their robots to the project files will provide an advantage for competitors during the preliminary selection process.
- 9. Competitors must participate in the competition with their completed robots that fulfill all the features specified in their project file. Competitors present in



Tradition of ITU Future of Robotics

the Innovation Arena area with only a project file or a robot that does not meet the required features will be excluded from the evaluation.